

Tower B  
Bella

# PASSO

FLOOR PLATES

BEYOND

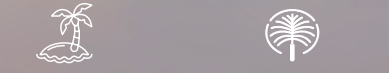
# Bella - Tower B Ground Floor

## UNIT TYPES

- THE BEACH MANSION
- 2 BEDROOM - DUPLEX
- 3 BEDROOM - DUPLEX

## KEY SECTION

BEACH    PALM / SKYLINE



OPEN SEA



AVITA  
TOWER A

BELLA  
TOWER B



PRIVATE BEACH ACCESS



CRESCENT ROAD

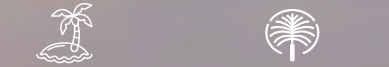
# Bella - Tower B 1st Floor

## UNIT TYPES

- THE BEACH MANSION
- 2 BEDROOM - DUPLEX
- 3 BEDROOM - DUPLEX

## KEY SECTION

BEACH    PALM / SKYLINE



OPEN SEA



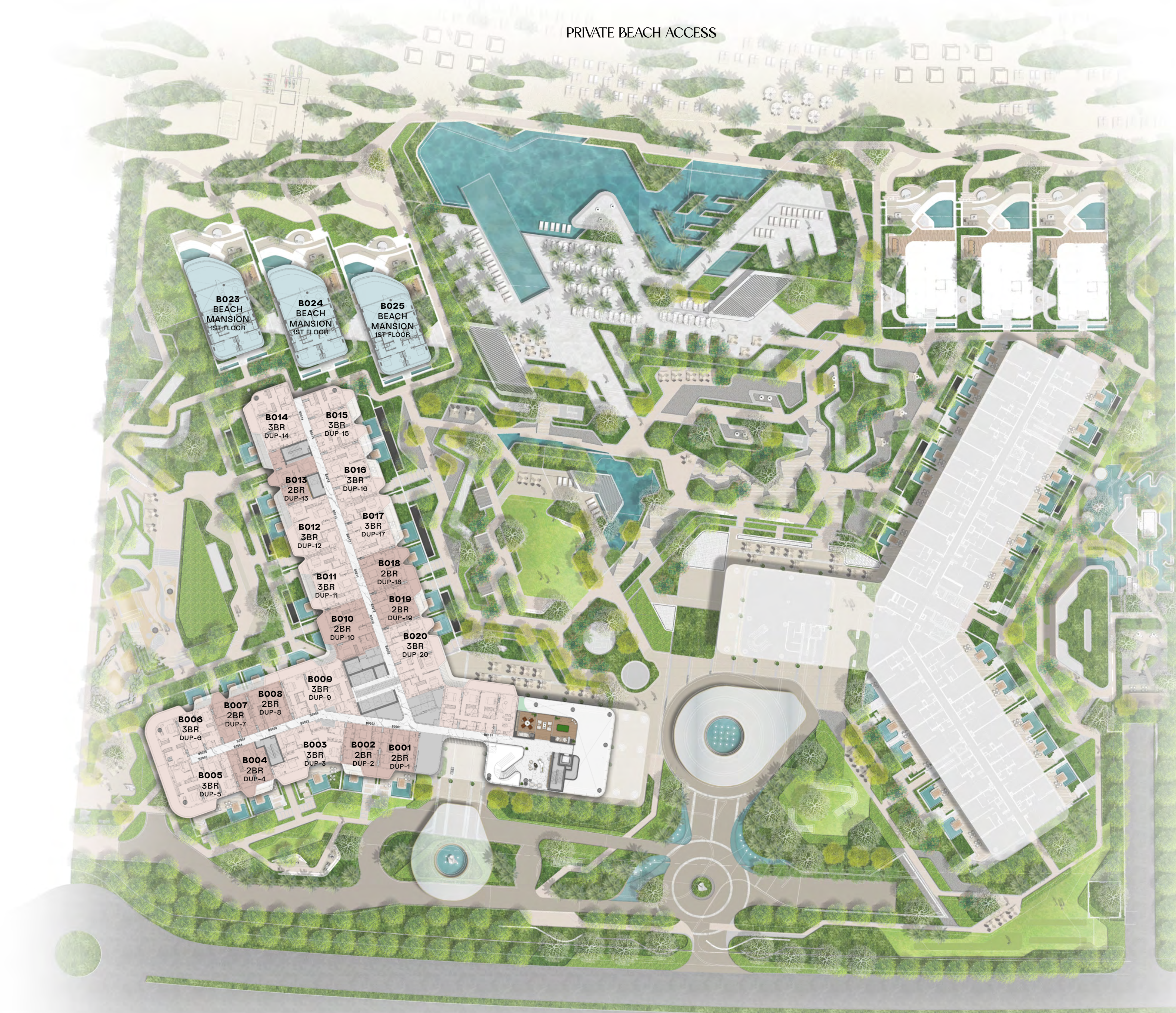
AVITA  
TOWER A

BELLA  
TOWER B

14  
13  
12  
11  
10  
09  
08  
07  
06  
05  
04  
03  
02  
01  
GF



PRIVATE BEACH ACCESS



CRESCENT ROAD

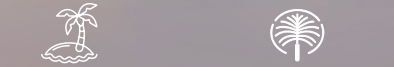
# Bella - Tower B 2nd Floor

## UNIT TYPES

- THE BEACH MANSION
- 1 BEDROOM
- 2 BEDROOM
- 3 BEDROOM

## KEY SECTION

BEACH    PALM / SKYLINE



OPEN SEA



AVITA  
TOWER A

BELLA  
TOWER B

- 14
- 13
- 12
- 11
- 10
- 09
- 08
- 07
- 06
- 04
- 03
- 02
- 01
- GF

# PASO



PRIVATE BEACH ACCESS



CRESCENT ROAD

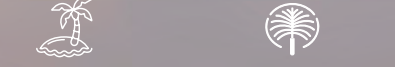
# Bella - Tower B 3rd Floor

## UNIT TYPES

- 1 BEDROOM
- 2 BEDROOM
- 3 BEDROOM

## KEY SECTION

BEACH    PALM / SKYLINE



OPEN SEA

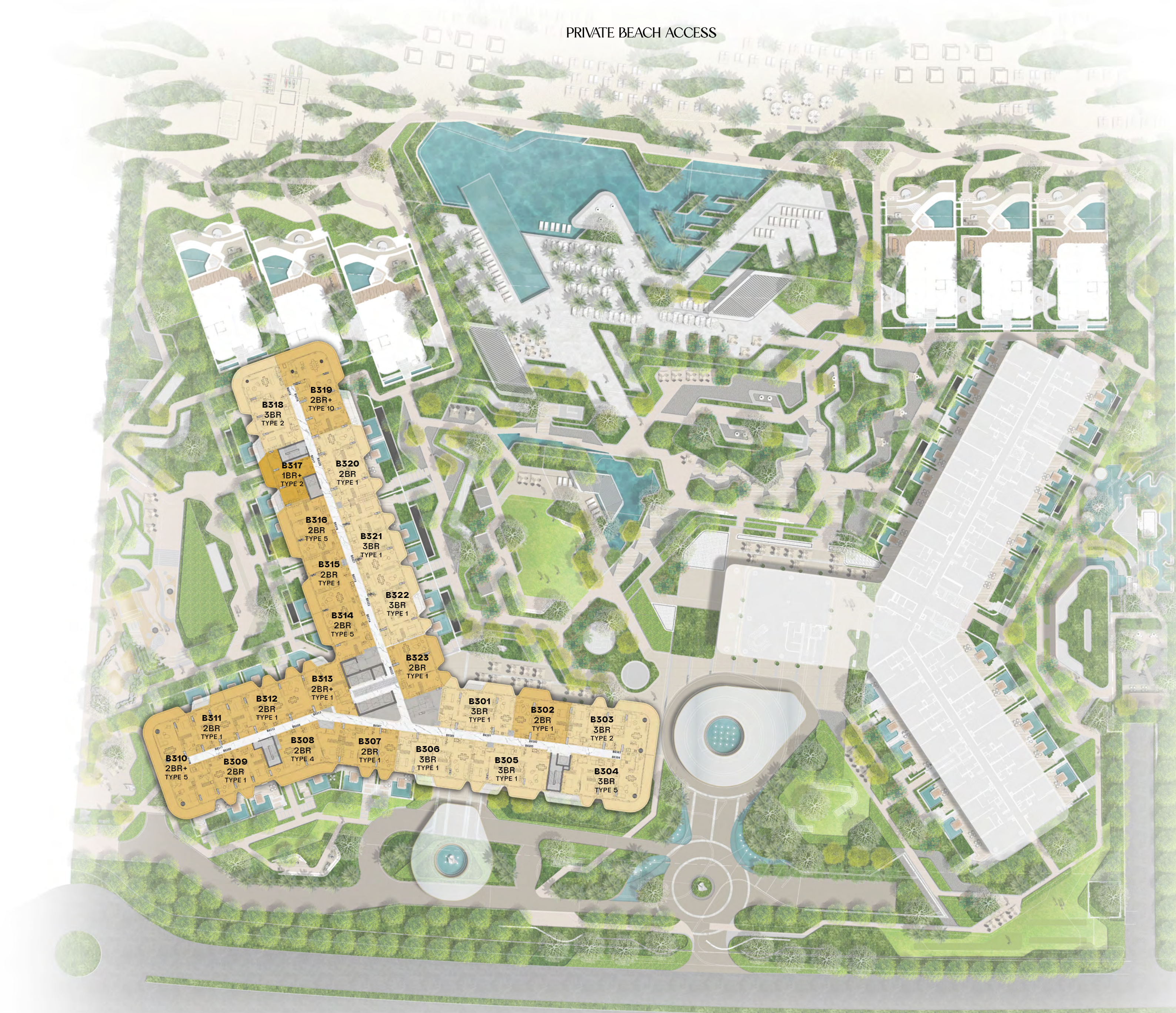


AVITA  
TOWER A

BELLA  
TOWER B



PRIVATE BEACH ACCESS



CRESCENT ROAD

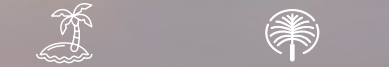
# Bella - Tower B 4th Floor

## UNIT TYPES

- 1 BEDROOM
- 2 BEDROOM
- 3 BEDROOM

## KEY SECTION

BEACH    PALM / SKYLINE



OPEN SEA

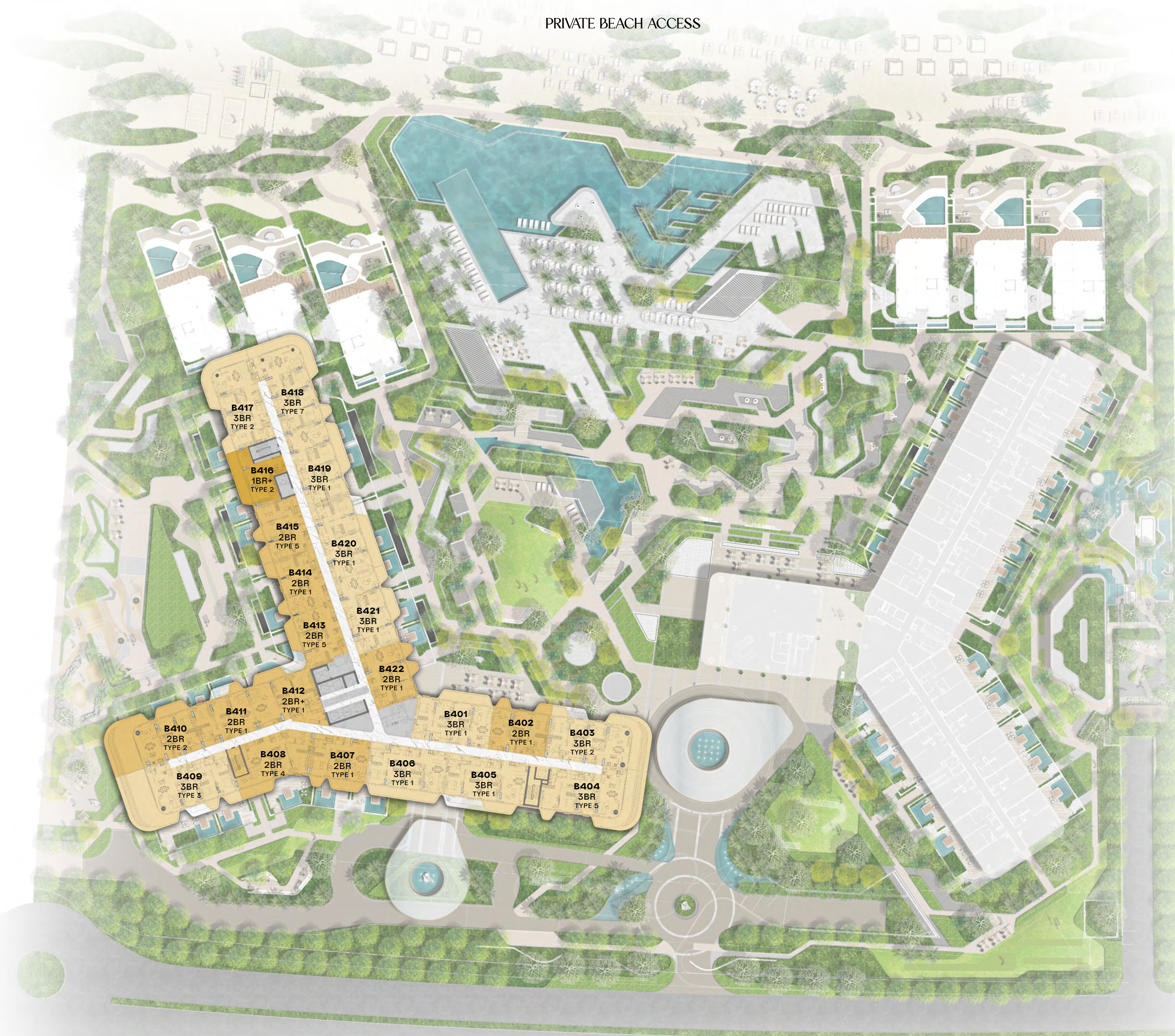


AVITA  
TOWER A

BELLA  
TOWER B



PRIVATE BEACH ACCESS



CRESCENT ROAD

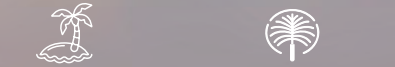
# Bella - Tower B 5th Floor

## UNIT TYPES

- 1 BEDROOM
- 2 BEDROOM
- 3 BEDROOM

## KEY SECTION

BEACH    PALM / SKYLINE



OPEN SEA



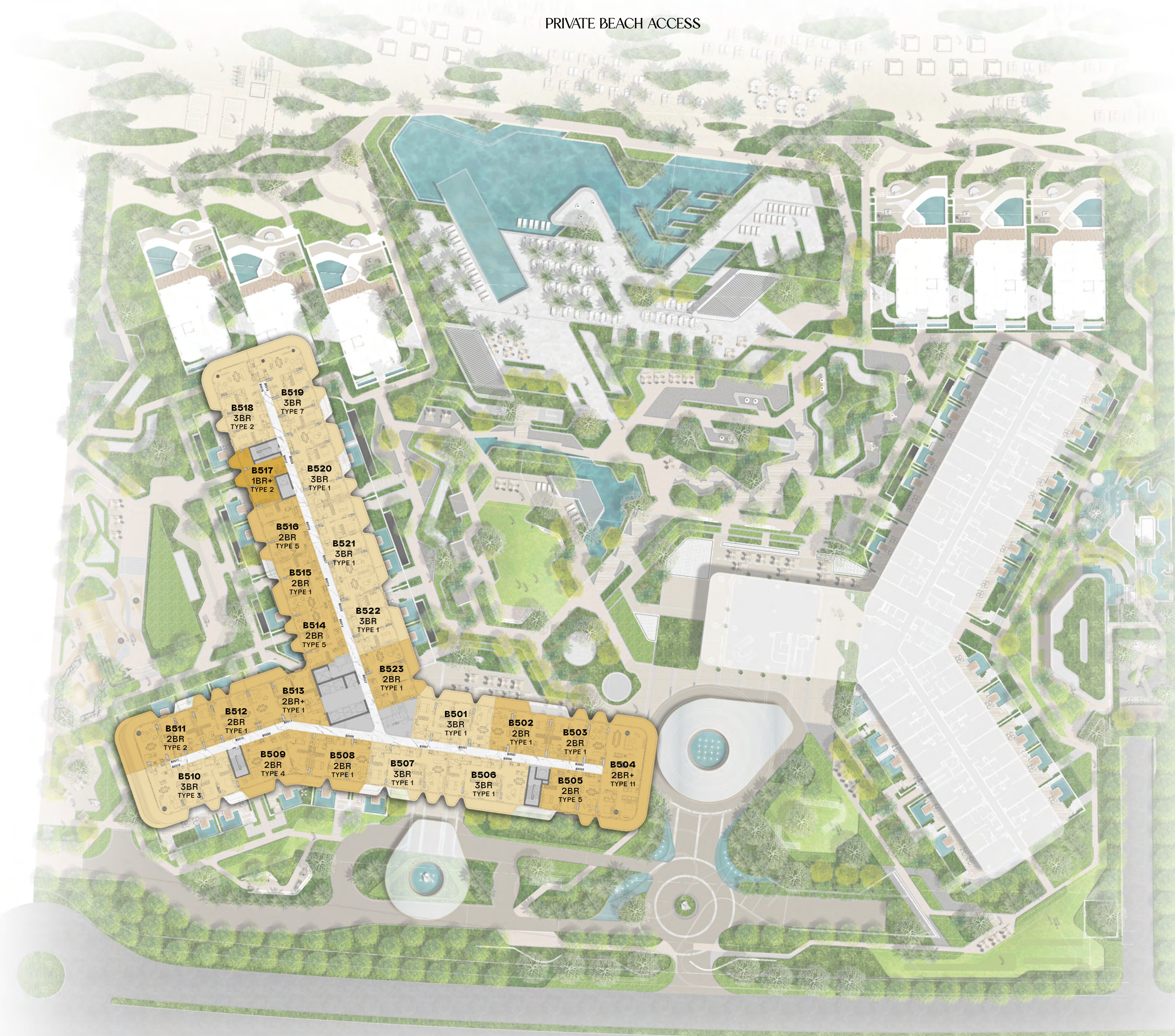
AVITA  
TOWER A

BELLA  
TOWER B

- 14
- 13
- 12
- 11
- 10
- 09
- 08
- 07
- 06
- 05
- 04
- 03
- 02
- 01
- GF



PRIVATE BEACH ACCESS



CRESCENT ROAD

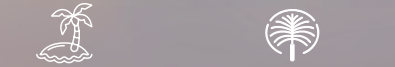
# Bella - Tower B 6th Floor

## UNIT TYPES

- 1 BEDROOM
- 2 BEDROOM
- 3 BEDROOM

## KEY SECTION

BEACH    PALM / SKYLINE



OPEN SEA

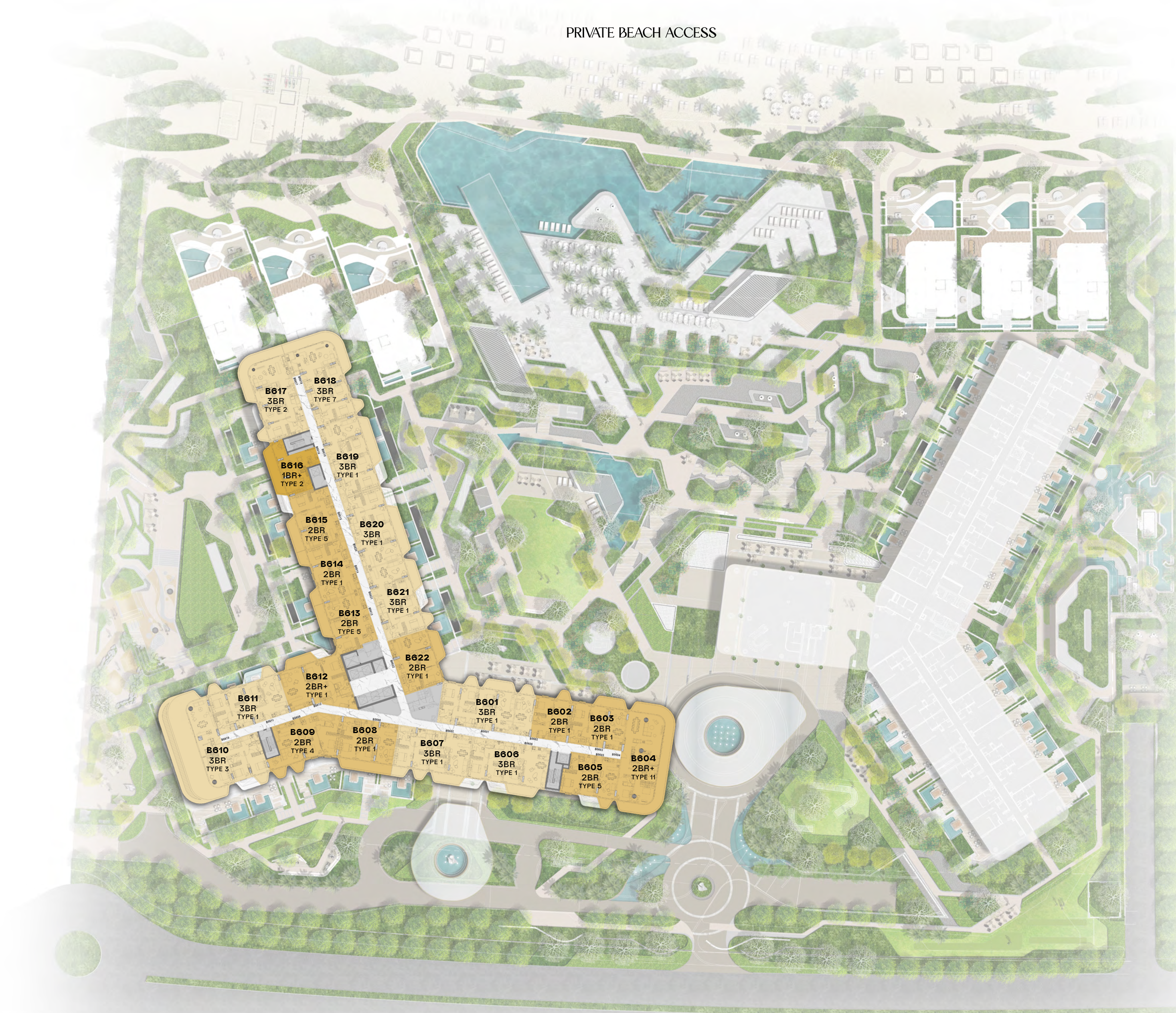


AVITA  
TOWER A

BELLA  
TOWER B



PRIVATE BEACH ACCESS



CRESCENT ROAD

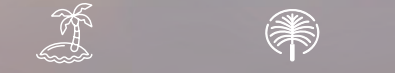
# Bella - Tower B 7th Floor

## UNIT TYPES

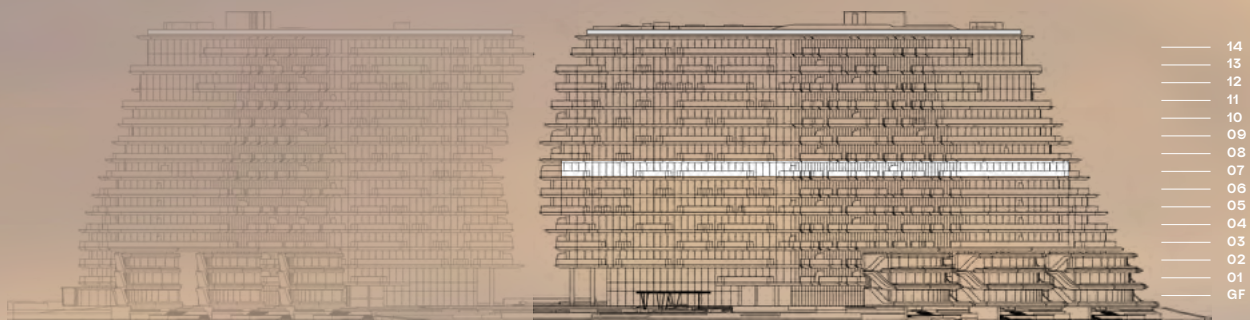
- 1 BEDROOM
- 2 BEDROOM
- 3 BEDROOM

## KEY SECTION

BEACH    PALM / SKYLINE



OPEN SEA

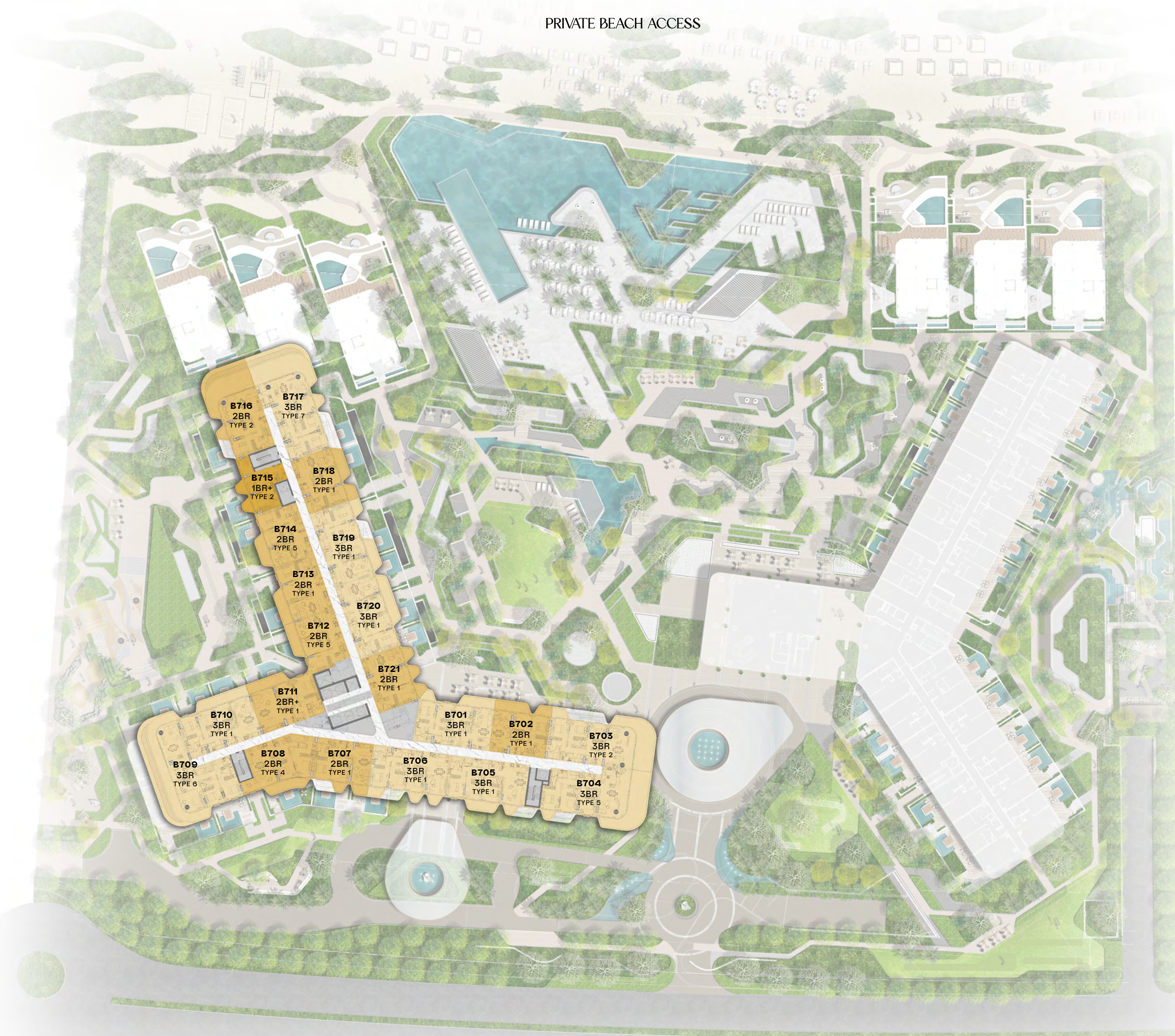


AVITA  
TOWER A

BELLA  
TOWER B

# PASO

PRIVATE BEACH ACCESS



CRESCENT ROAD

# Bella - Tower B 8th Floor

## UNIT TYPES

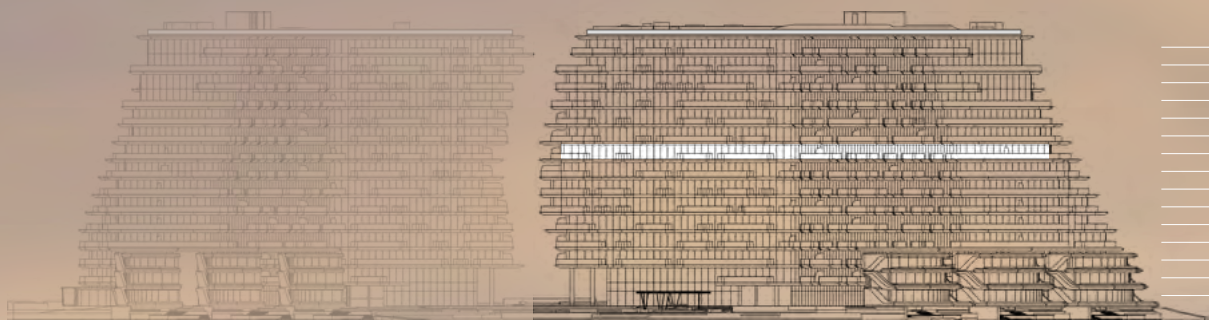
- 1 BEDROOM
- 2 BEDROOM
- 3 BEDROOM

## KEY SECTION

BEACH    PALM / SKYLINE



OPEN SEA



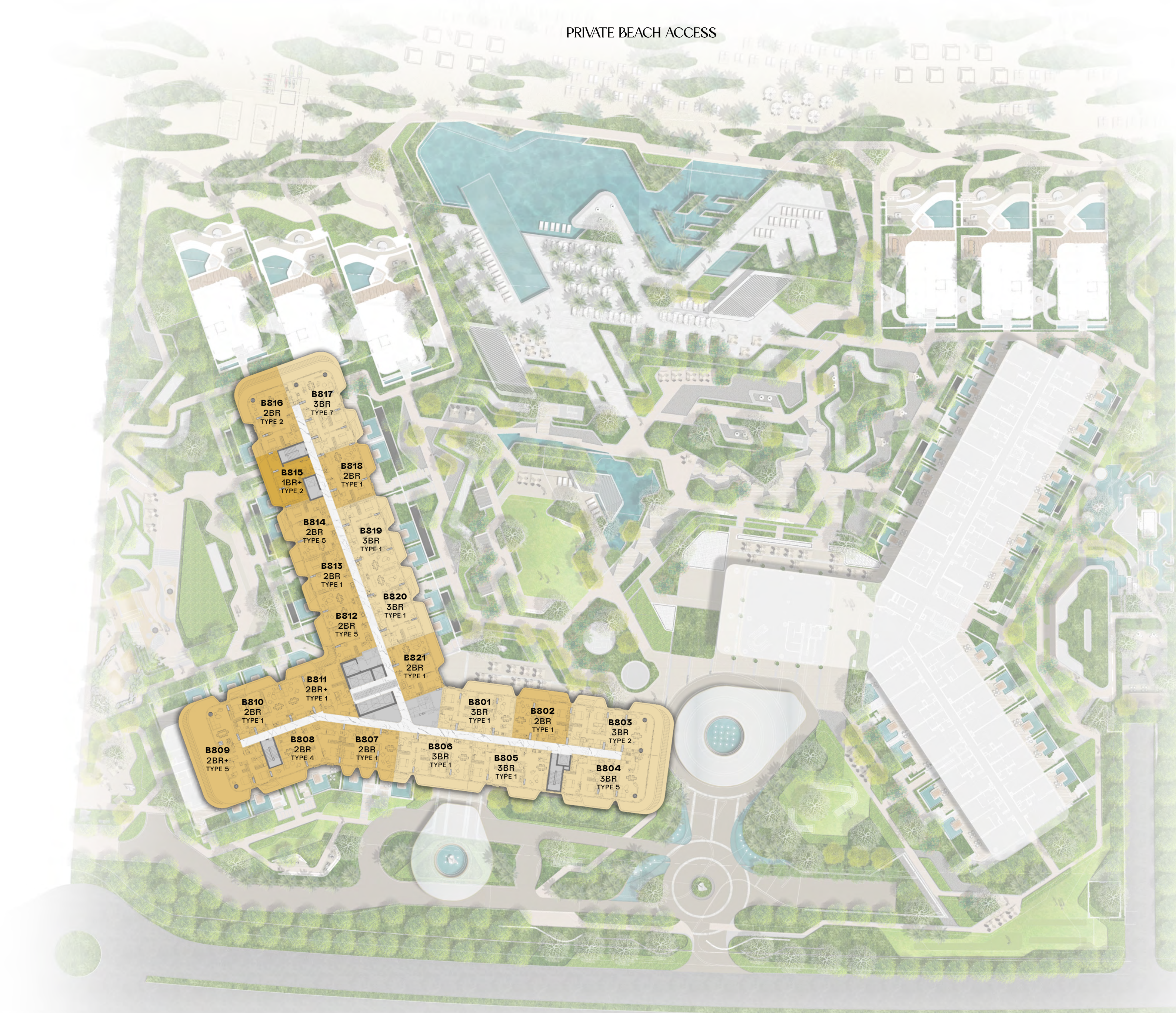
AVITA  
TOWER A

BELLA  
TOWER B

- 14
- 13
- 12
- 11
- 10
- 09
- 08
- 07
- 06
- 05
- 04
- 03
- 02
- 01
- GF

# PASO

PRIVATE BEACH ACCESS



CRESCENT ROAD

# Bella - Tower B 9th Floor

## UNIT TYPES

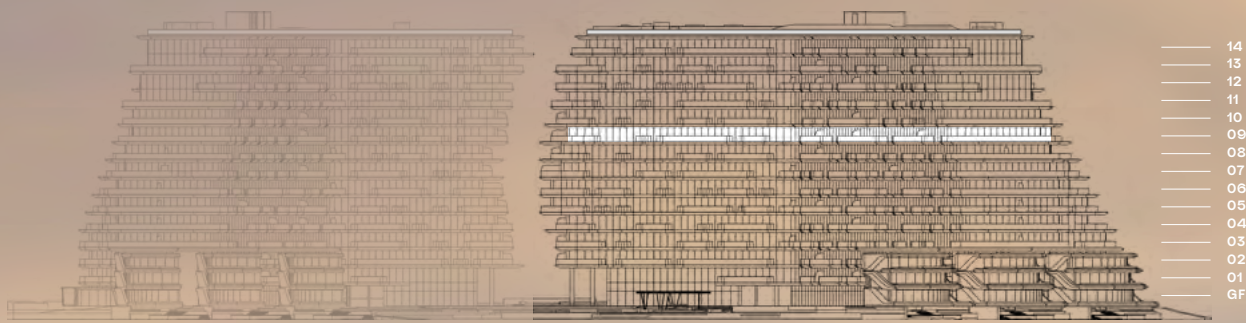
- 1 BEDROOM
- 2 BEDROOM
- 3 BEDROOM

## KEY SECTION

BEACH    PALM / SKYLINE



OPEN SEA

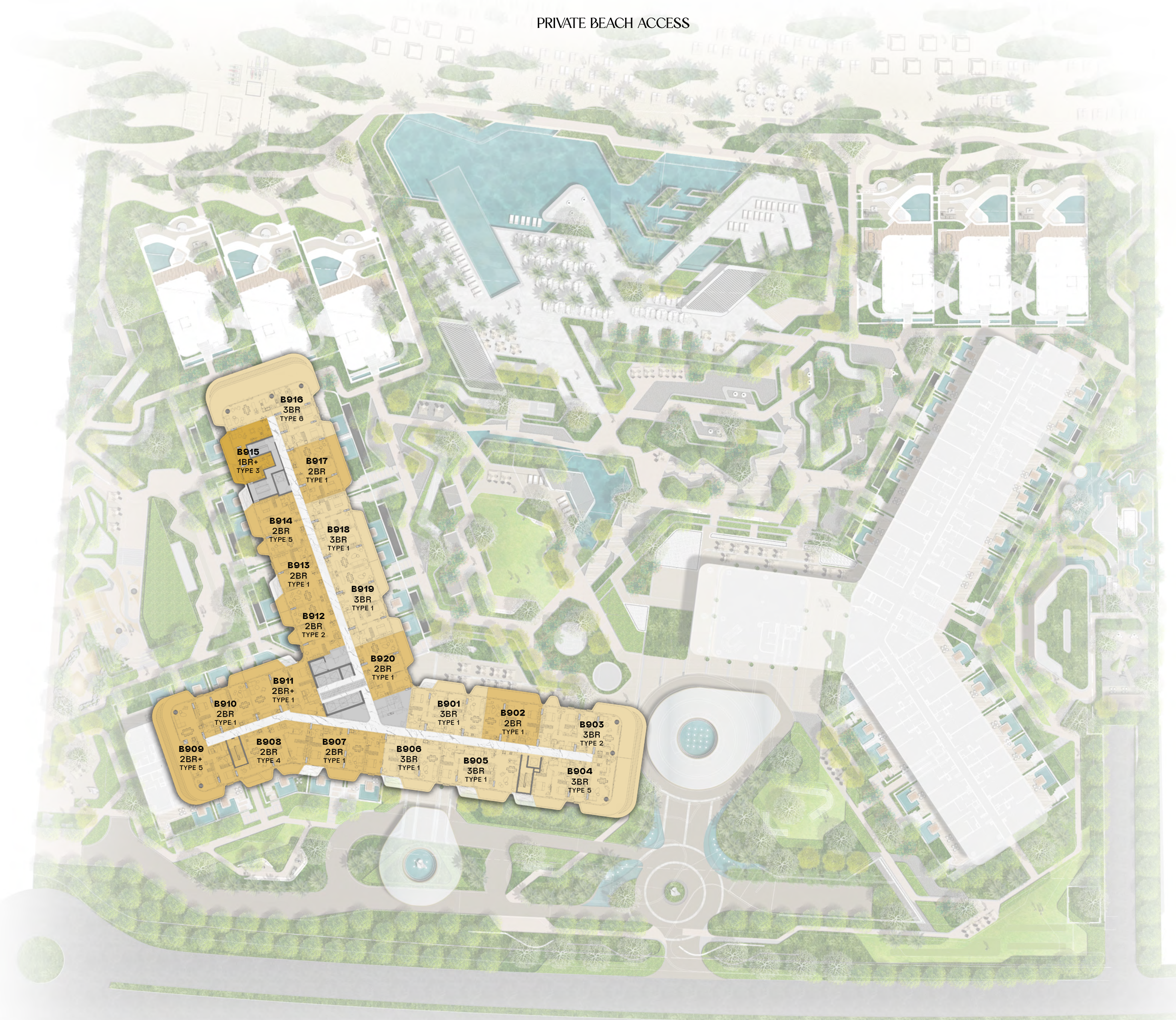


AVITA  
TOWER A

BELLA  
TOWER B



PRIVATE BEACH ACCESS



CRESCENT ROAD

# Bella - Tower B 10th Floor

## UNIT TYPES

- 1 BEDROOM
- 2 BEDROOM
- 3 BEDROOM

## KEY SECTION

BEACH    PALM / SKYLINE



OPEN SEA



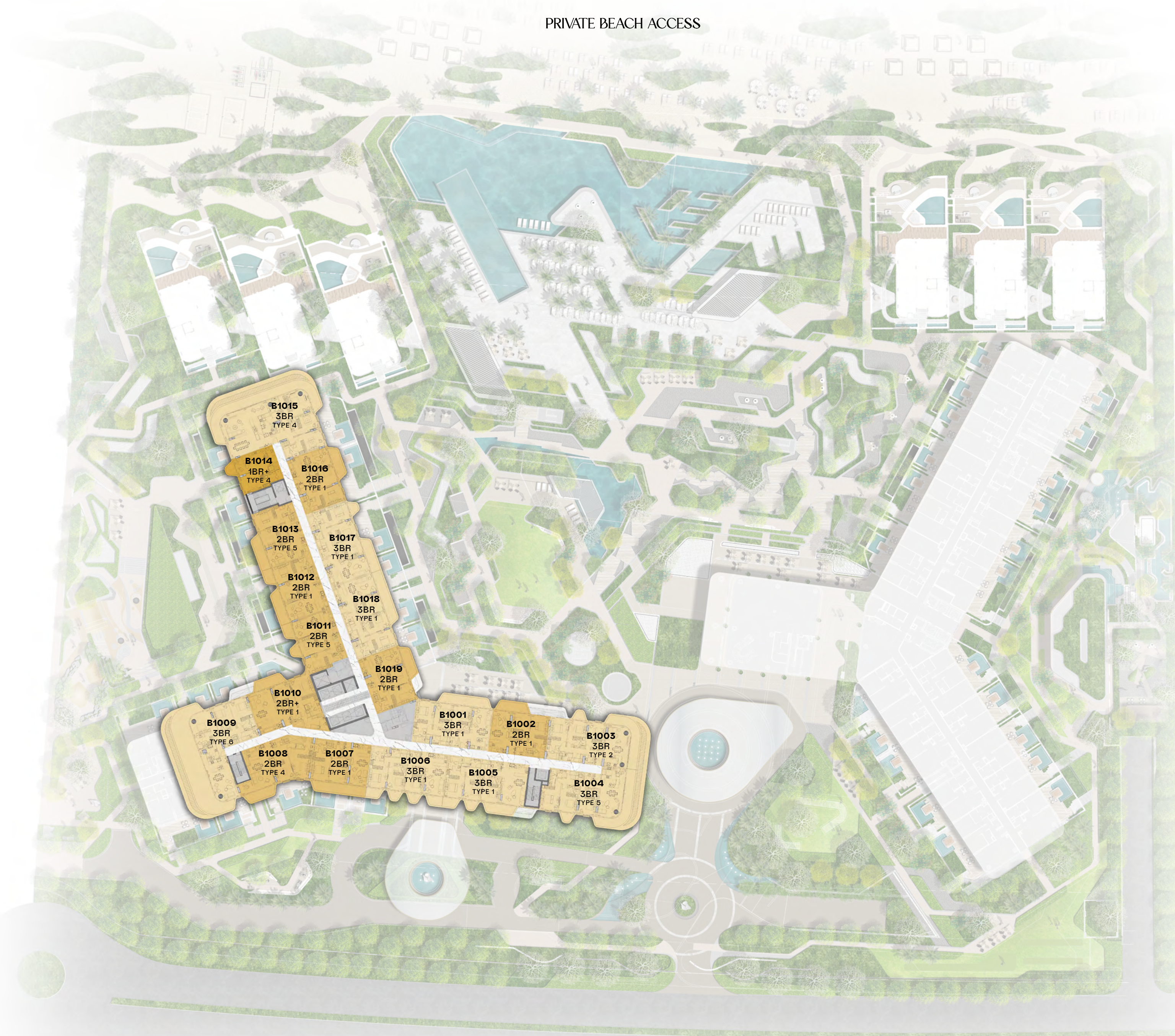
AVITA  
TOWER A

BELLA  
TOWER B

- 14
- 13
- 12
- 11
- 10
- 09
- 08
- 07
- 06
- 05
- 04
- 03
- 02
- 01
- GF

# PASO

PRIVATE BEACH ACCESS



CRESCENT ROAD

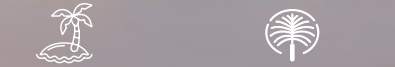
# Bella - Tower B 11th Floor

## UNIT TYPES

- 1 BEDROOM
- 2 BEDROOM
- 3 BEDROOM
- PENTHOUSE

## KEY SECTION

BEACH    PALM / SKYLINE



OPEN SEA



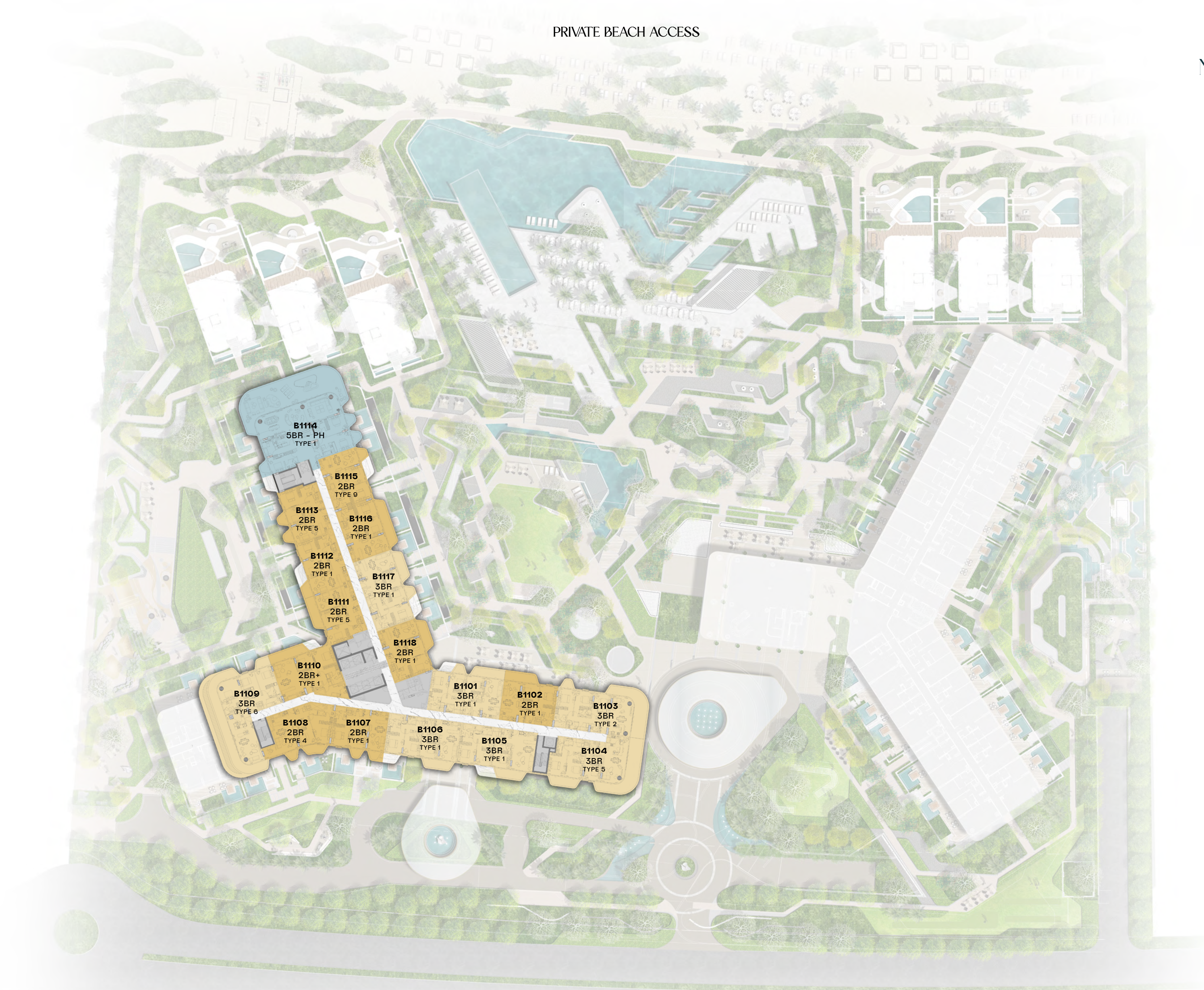
AVITA  
TOWER A

BELLA  
TOWER B

- 14
- 13
- 12
- 11
- 10
- 09
- 08
- 07
- 06
- 05
- 04
- 03
- 02
- 01
- GF



PRIVATE BEACH ACCESS



- B1114**  
5BR - PH  
TYPE 1
- B1115**  
2BR  
TYPE 9
- B1113**  
2BR  
TYPE 5
- B1116**  
2BR  
TYPE 1
- B1112**  
2BR  
TYPE 1
- B1117**  
3BR  
TYPE 1
- B1111**  
2BR  
TYPE 5
- B1118**  
2BR  
TYPE 1
- B1110**  
2BR+  
TYPE 1
- B1109**  
3BR  
TYPE 6
- B1101**  
3BR  
TYPE 1
- B1102**  
2BR  
TYPE 1
- B1103**  
3BR  
TYPE 2
- B1108**  
2BR  
TYPE 4
- B1107**  
2BR  
TYPE 1
- B1106**  
3BR  
TYPE 1
- B1105**  
3BR  
TYPE 1
- B1104**  
3BR  
TYPE 5

CRESCENT ROAD

# Bella - Tower B 12th Floor

## UNIT TYPES

- 1 BEDROOM
- 2 BEDROOM
- 3 BEDROOM
- PENTHOUSE

## KEY SECTION

BEACH    PALM / SKYLINE



OPEN SEA



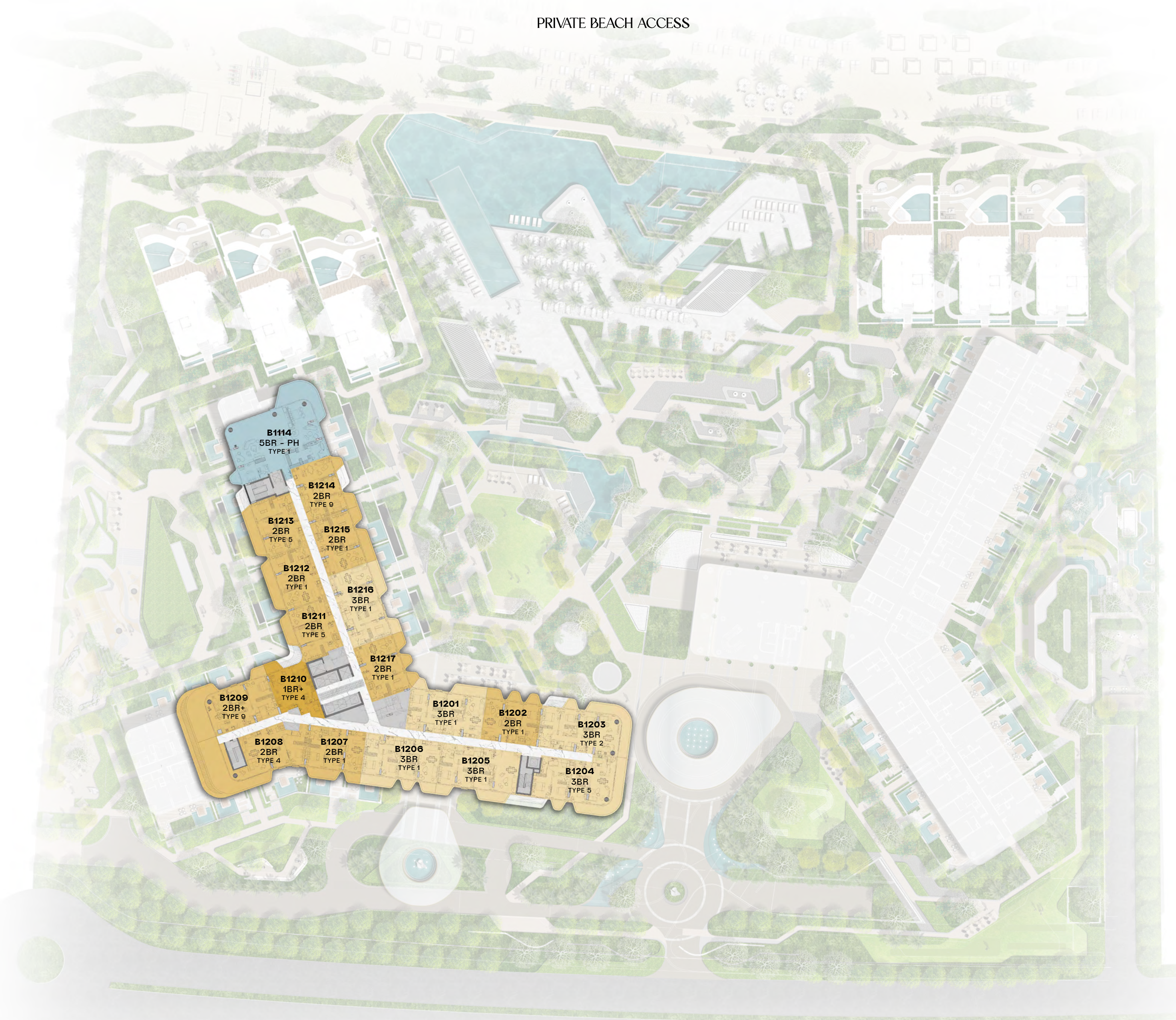
AVITA  
TOWER A

BELLA  
TOWER B

14  
13  
12  
11  
10  
09  
08  
07  
06  
05  
04  
03  
02  
01  
GF



PRIVATE BEACH ACCESS



- B1114**  
5BR - PH  
TYPE 1
- B1214**  
2BR  
TYPE 9
- B1213**  
2BR  
TYPE 6
- B1215**  
2BR  
TYPE 1
- B1212**  
2BR  
TYPE 1
- B1216**  
3BR  
TYPE 1
- B1211**  
2BR  
TYPE 5
- B1217**  
2BR  
TYPE 1
- B1209**  
2BR+  
TYPE 9
- B1210**  
1BR+  
TYPE 4
- B1201**  
3BR  
TYPE 1
- B1202**  
2BR  
TYPE 1
- B1203**  
3BR  
TYPE 2
- B1208**  
2BR  
TYPE 4
- B1207**  
2BR  
TYPE 1
- B1206**  
3BR  
TYPE 1
- B1205**  
3BR  
TYPE 1
- B1204**  
3BR  
TYPE 5

CRESCENT ROAD

# Bella - Tower B 13th Floor

## UNIT TYPES

- 1 BEDROOM
- 2 BEDROOM
- 3 BEDROOM
- PENTHOUSE

## KEY SECTION

BEACH    PALM / SKYLINE



OPEN SEA

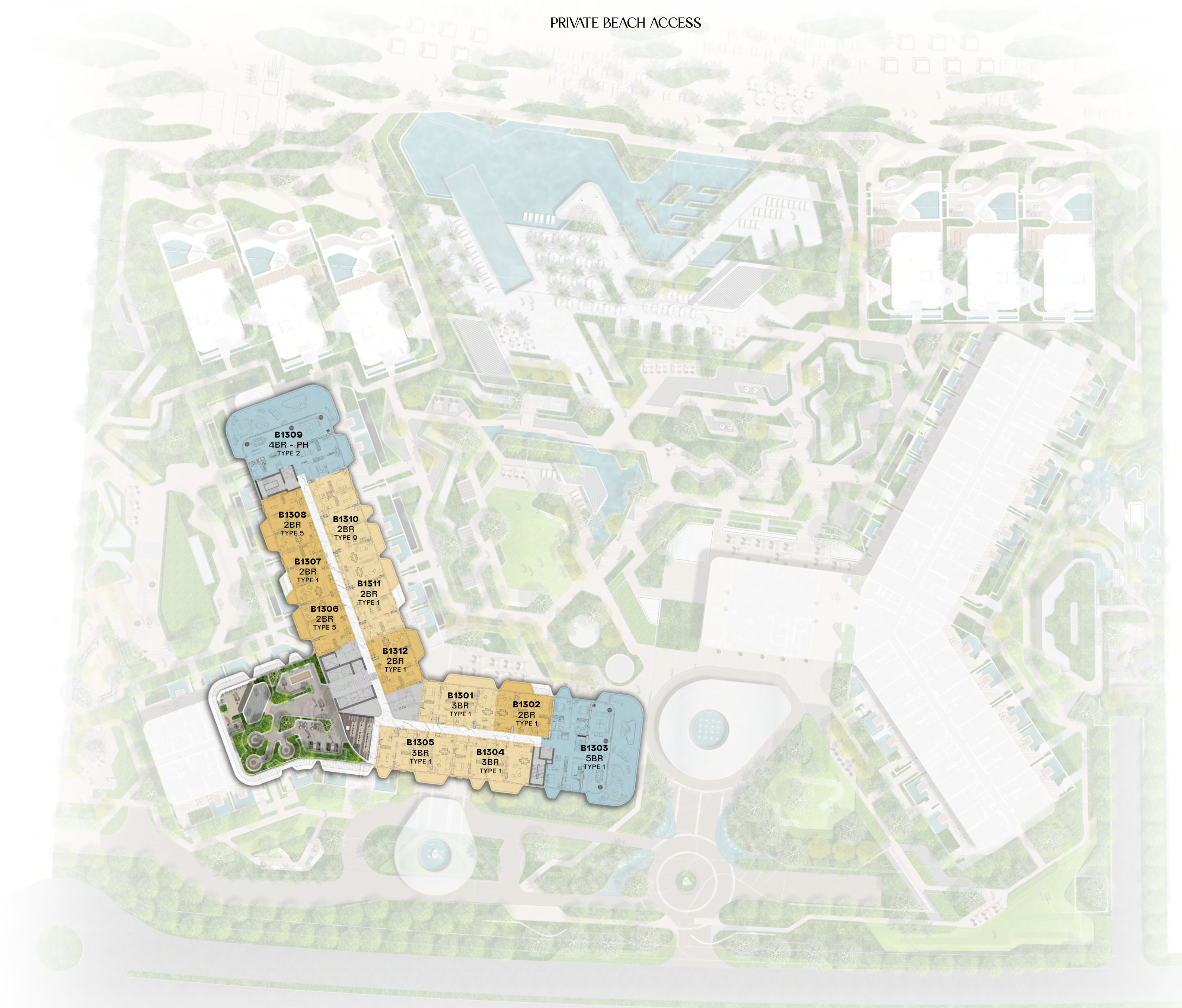


AVITA  
TOWER A

BELLA  
TOWER B



PRIVATE BEACH ACCESS



- B1309**  
4BR - PH  
TYPE 2
- B1308**  
2BR  
TYPE 5
- B1310**  
2BR  
TYPE 9
- B1307**  
2BR  
TYPE 1
- B1311**  
2BR  
TYPE 1
- B1306**  
2BR  
TYPE 5
- B1312**  
2BR  
TYPE 1
- B1301**  
3BR  
TYPE 1
- B1302**  
2BR  
TYPE 1
- B1305**  
3BR  
TYPE 1
- B1304**  
3BR  
TYPE 1
- B1303**  
5BR  
TYPE 1

CRESCENT ROAD

# Bella - Tower B 14th Floor

## UNIT TYPES

- 1 BEDROOM
- 2 BEDROOM
- 3 BEDROOM
- 4 BEDROOM
- PENTHOUSE

## KEY SECTION

BEACH    PALM / SKYLINE



OPEN SEA



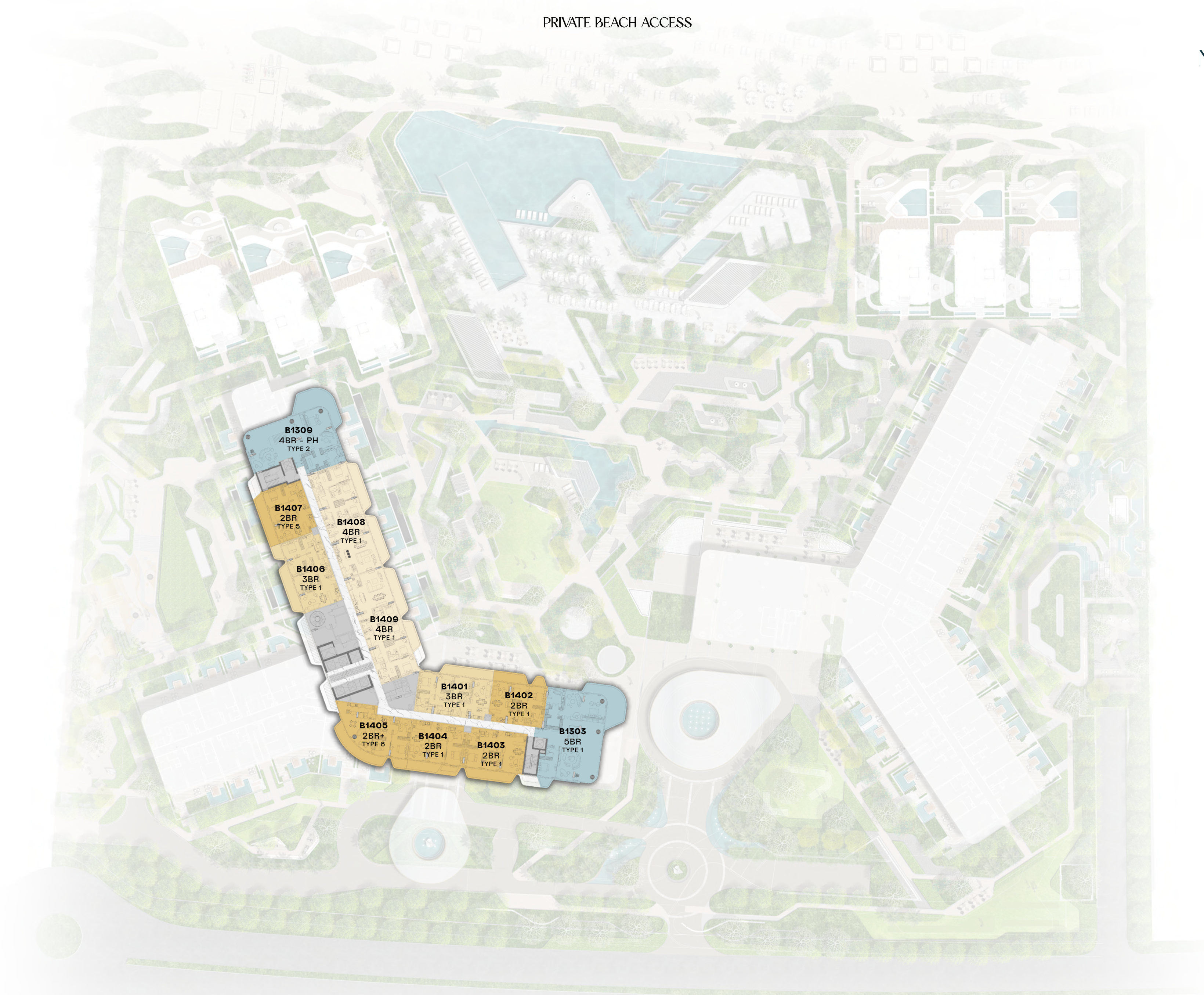
AVITA  
TOWER A

BELLA  
TOWER B

14  
13  
12  
11  
10  
09  
08  
07  
06  
05  
04  
03  
02  
01  
GF



PRIVATE BEACH ACCESS



CRESCENT ROAD

# PASSO

BEYOND

[WWW.BEYONDDEVELOPMENTS.AE](http://WWW.BEYONDDEVELOPMENTS.AE)

Interior renders: These renders are non-binding, for illustrative purposes only, and subject to change without notice. Final materials, finishes, and configurations may differ based on availability, design updates, and approvals. Loose furniture, fixtures, lighting, wall cladding, and mounted items are NOT included. In case of conflict, contractual documents, including the Sale and Purchase Agreement (SPA), will prevail. THE DEVELOPER SHALL NOT BE HELD RESPONSIBLE FOR ANY DISCREPANCIES, INACCURACIES, ERRORS, OR OMISSIONS IN THE RENDERS, NOR FOR ANY CONSEQUENCES, LOSSES, OR DAMAGES RESULTING FROM RELIANCE ON THEM AND MAKES NO GUARANTEES OF THEIR ACCURACY OR COMPLETENESS. Exterior Renders: These renders are non-binding, for illustrative purposes only, and subject to change without notice. In case of conflict, contractual documents, including the Sale and Purchase Agreement (SPA), will prevail. THE DEVELOPER SHALL NOT BE HELD RESPONSIBLE FOR ANY DISCREPANCIES, INACCURACIES, ERRORS, OR OMISSIONS IN THE RENDERS, NOR FOR ANY CONSEQUENCES, LOSSES, OR DAMAGES RESULTING FROM RELIANCE ON THEM AND MAKES NO GUARANTEES OF THEIR ACCURACY OR COMPLETENESS.